

# **le vele d'epoca a napoli**

## **XXI<sup>a</sup> edition / Napoli-Ischia, june 19th – 23rd 2024**

### **SAILING INSTRUCTIONS**

#### **ABBREVIATIONS**

- ONB- Official Notice Board
- RC - Race Committee
- TC - Technical Committee
- CIM - Comité International de Méditerranée
- NOR - Notice of Race
- SI - Sailing Instructions
- INTERCO - International Code of Signals
- MNA – Marine National Authority
- RRS - Racing Rules of Sailing World Sailing (WS) 2021-2024, *Rule*
- RO - Race Office
- OA - Organizing Authority
- WS - World Sailing

#### **1. RACE OFFICE**

Reale Yacht Club Canottieri Savoia - Banchina S. Lucia13, 80132 Napoli  
Tel. +39 081 7646162 +39 081 7646266 [www.ryccsavoia](http://www.ryccsavoia) email: [infovela@ryccsavoia.it](mailto:infovela@ryccsavoia.it)

#### **2. NOTICE TO COMPETITORS**

Notices to the competitors will be posted on the ONB no later than 90 minutes before the start of the race in which they will take effect.

#### **3. SCHEDULE**

Wednesday 19th june (ISCHIA)	<b>Arrivals, registrations</b>	
Thursday 20th june (ISCHIA)	<b>Flag rising 10:00 a.m. Buoy race</b>	<b>Warning signal: 11:25 a.m.</b>
Friday 21st june (ISCHIA)	<b>Buoy race</b>	<b>Warning signal: 11:25 a.m.</b>
Saturday 22nd june (ISCHIA-NAPOLI)	<b>Coastal race</b>	<b>Warning signal: 11:25 a.m.</b>
Sunday 23rd june (ISCHIA)	<b>Parade and coastal race</b>	<b>Warning signal: 12:55 a.m.</b>

Any changes to warning signal of the scheduled departures will be posted on the ONB by 7:30 p.m. the day before it will take effect.

#### **4. SIGNALS MADE ASHORE**

- 4.1.** Signals made ashore will also be posted on the ONB.
- 4.2.** When code flag AP is displayed ashore, “1 minute” is replaced with “not less than 60 minutes” in Race Signal AP. This changes RRS “Race Signals”.

#### **5. STARTING RACES**

- 5.1.** Races will be started according to RRS 26.
- 5.2.** At discretion of the RC will be given separate departures.
- 5.3.** DR 21-01 applies.
- 5.4.** The definition of “Start” is amended as follows:

Start: A boat starts when, after having been with its hull completely in the pre-start part of the starting line, and having complied with regulation 30.1 when it applies, any part of its hull crosses the starting line from the pre-start side to the side of the course


- (a) at the time of or after its starting signal, or
- (b) during the last 60 seconds before its starting signal

When a boat starts as per point (b) of the Departure definition, it must not return to the pre-start side of the line, and its “race time” will be increased by 10%.

- 5.5. Boats starting later than 15 minutes after her start signal will be scored DNS without a hearing (this changes RRS 35, 63.1, A4 and A5).
- 5.6. To warn boats that a race is about to begin, an orange flag will be displayed not less than 5 minutes before the warning signal.

## 6. CLASS FLAGS

6.1. The class flag will be:

Vintage Yacht	
Classic Yacht	
Classic IOR	

## 7. START

- 7.1. The starting line will be between a staff displaying an orange flag on the RC boat and the course side of the port-end mark.
- 7.2. At any starting, a limit mark may be tied to a cable astern of the RC boat; these extensions shall be considered an integral part of the RC boat.

## 8. FINISH

- 8.1. Finish line, in the race of june the 20th 21st and 23rd, will be between a yellow mark and the blue flag displayed on the RC boat.
- 8.2. Finish line, in the coastal race of june the 22nd, will be between the blue flag displayed on the “Club Nautico della Vela” terrace at Borgo Marinari (approximately at 40°49.698' - N 14° 14.927' E) and a mark at approximately 40°49.758' N - 14°15.385' E.

## 9. MARKS

- 9.1. Starting, course and finish will be inflatable WHITE marks and may be substitute by a rib displaying “M” flag of the INTERCO.

## 10. COURSES

See “Annex 1 – Courses” at the end of this SI.

## 11. PROHIBITED SAILING WATERS

Before, during and after the races, the boats are required to comply with the constraints relating to the Marine Protected Area called "Regno di Nettuno" and in particular the total interdiction of navigation in the cat. A areas as indicated on the map of “ANNEX 2 – AREAS CLOSED TO NAVIGATION”.

## 12. TIME LIMITS

- 12.1. Time limit, for all races, is at **5:00 p.m.** at any case. If no boat finishes within the race time limit, race will be CANCELED and will NOT BE RESAILED. If a boat will arrive within this time, the time limit will be

extended by 30 minutes and all boats in the same class/group shall be scored according to their finishing places unless the race is abandoned within (this changes RRS 35).

**12.2.** Only for the race sailed on June 23rd, time limit will be at **4:00 p.m.**

### **13. SCORING**

**13.1.** The Low Point Scoring System according RRS A4 will be applied.

**13.2.** 4 races are provided.

**13.3.** The event will be valid for each class/group if at least one (1) race is completed.

**13.4.** Vintage and classic yachts will be divided into two distinct categories; if the number of participants allows it, they will be further divided according to the length of the hull or according to the APM. The list of groups will be displayed on the ONB before the start of the first race.

### **14. HEARING REQUEST**

**14.1.** The boat who intends to protest another boat shall inform immediately the RC after its arrival (this modifies RRS 61.1(a)).

**14.2.** The Hearing Request form shall be delivered online within sixty (60) minutes after the finish of the last race of the requesting boat or after the RC signals that there will be no more racing that day, whichever is later, by clicking on "+" symbol on the ONB. If the system is not operational, please contact the RO to receive authorization to send the request via email (this changes RRS 61.2, 62.2 and 66.2). On the last day of the event, the time limit for protests and requests for redress is reduced to 30 minutes (this changes RRS 62.2 and 66).

**14.3.** Notices to inform competitors of hearings in which they are parties or named as witnesses will be published no later than 60 minutes after the time limit. Hearings will be held in the assigned protest room as communicated.

**14.4.** All competitors are required to promptly view all the notices published on the ONB and all parties to the hearing shall appear before the Protest Committee on day, time and place indicated.

### **15. ADVERTISING**

**15.1.** CIM prohibits any advertising. Yachts must also respect it when mooring and while sailing between it and the competition area. When moored, they may however be invited to display a flag event on the forestay.

### **16. INSPECTIONS AND MEASUREMENTS CHECKS**

**16.1.** As well as at mooring, all yachts may be subjected to checks up to 30 minutes before they leave the berth and within 60 minutes after they come back.

### **17. PENALTIES**

**17.1.** A boat may take a One-Turn Penalty when she may have broken one or more rules of RRS Part 2 after getting well clear of other boats as soon after the incident as possible. It will include one tack and one gybe (this changes RRS 44.1).

**17.2.** A boat that has self-penalized or retired, in accordance with RRS 44.1, shall fill the "Penalty Report" or "Retirement Report", available on the ONB, within the time limit for protests.

**17.3.** For broken rule(s) not to the RRS Part 2, it will be applied, through a hearing, P.19 CIM Regulation.

**17.4.** OCS boats will receive a 10% scoring penalty of their real time.

### **18. PARADE**

**18.1.** On the 23rd of June, the boats shall leave the Port of S. Lucia one at a time, in single file, moving approximately 300 meters parallel to the Nazario Sauro seafront, parading in front of the terrace of the Rari Nantes Yacht Club where will be located the "Jury of Elegance".

**18.2.** On leaving the port they will play repeatedly (with the available acoustic instruments) and the crew lined up on deck will greet the Jury.

The "Jury of Elegance" will consider:

- The quality of renovation

- The elegance of the uniforms
- The type of greeting

The “Elegance Award” will be awarded on the prizegiving.

## 19. SAFETY

Each yacht shall have the safety equipment required by its MNA.

## 20. REPLACEMENT CREW

Changes to the crew list shall be requested in writing to the RC. Request form shall be delivered online, clicking on “+” symbol on the ONB and choosing “Crew substitution” form.

## 21. TRASH DISPOSAL

21.1. It’s forbidden to throw any object into the water, biodegradable or not.

21.2. In the event of breaking this rule, competitors may receive a penalty that may lead to disqualification.

## 22. ENGINE PROPULSION

22.1. The use of the engine is permitted exclusively for safety reasons.

22.2. In any case it will not be used to maintain position or increase speed with it.

22.3. The Protest Committee will not give penalties if the use of the engine complies to the RRS 42.3(h).

## 23. MOB

23.1. External assistance is permitted in the event of a man overboard. A competitor cannot be penalized if he does not continue the race until the man is back on board (this changes RRS 41).

## 24. RADIO CHANNEL

24.1. The official channel of the event is VHF channel 74 (or, in case of unavailability, VHF channel 69) on which the competitors will have to listen starting ninety (90) minutes before the expected "warning" signal until the end of the race and upon returning to port. On it, possibly, the signals displayed on the RC boat and/or displayed ashore can be verbally repeated; other and/or appropriate useful communications may also be transmitted by the RC. The failure or incorrect transmission of these verbal repetitions shall not be grounds for a protest or a redress request (this changes RRS 60.1).








24.2. Competitors may use VHF channel 74, as well as for the listening mode, exclusively for:

- a) safety or emergency communications;
- b) the abandonment of the race;
- c) call the RC in coastal races before the finish, when expected.

24.3. It is forbidden, during the races, to use VHF channel 74 for communications between boats, for requests for information to the RC or for other reports such as communications of rule(s) broken and intentions to protest. Protests or redress request shall not be grounds for facts resulting from this regulation (this changes 60.1 RRS).

## ANNEX 1 – COURSES

STARTING/FINISH AREAS, MARKS COORDINATES	
NAME	POSITION
S/F SO	40° 44.293' N - 13° 50.201' E
WM	Eventual wind mark
DELTA MARK	40° 41.121' N - 13° 53.615' E
ECHO MARK	40° 45.656' N - 13° 59.904' E
FOXTROT MARK	40° 46.039' N - 13° 52.270' E
TANGO MARK	40° 48.614' N - 14° 02.143' E
VICTOR MARK	40° 48.707' N - 13° 59.655' E
WHISKY MARK	40° 49.160' N - 14° 13.260' E
ZULU MARK	40° 48.703' N - 13° 56.859' E
SPM	40° 44.489' N - 13° 57.594' E
SCR	40° 43.528' N - 13° 58.288' E
CNV MARK	40° 49.758' N - 14° 15.385' E

COURSE N°	COURSE						DISTANCE (approx)
1 	S/F SO	WM	FOXTROT MARK	ECHO MARK	S/F SO		17 NM
2 	S/F SO	WM	ECHO MARK	TANGO MARK	S/F SO		22 NM
3 	S/F SO	WM	ECHO MARK	VICTOR MARK	S/F SO		20 NM
4 	S/F SO	WM	ECHO MARK	ZULU MARK	S/F SO		18,5 NM
5 	S/F SO	WM	FOXTROT MARK	ISCHIA CHANNEL*	WHISKY MARK	CNV MARK	23 NM
6 	SPM	WM	FOXTROT MARK	S/F SO			7 NM
7 	SCR	WM	DELTA MARK	S/F SO			9,5 NM

\*Procida Isle to leave at port, Ischia Island to leave at starboard

■ Left at starboard      ■ Left at port



XXI edizione **19-23 giugno 2024** Napoli - Forio d'Ischia  
**Le vele d'epoca a napoli**

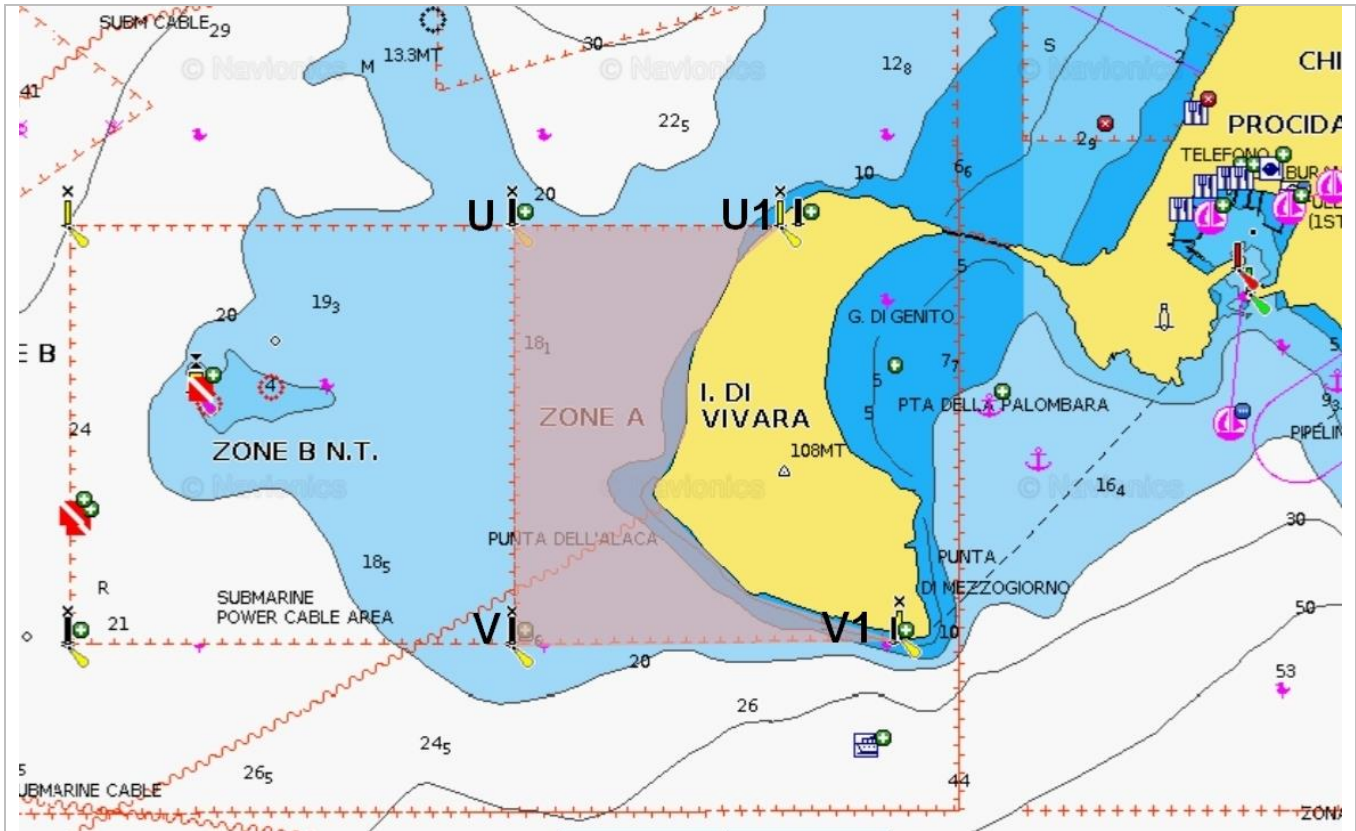


Google Earth  
Data SRTM30 PLUS, US Navy/NOAA, GEBCO  
Map © 2024 Airbus

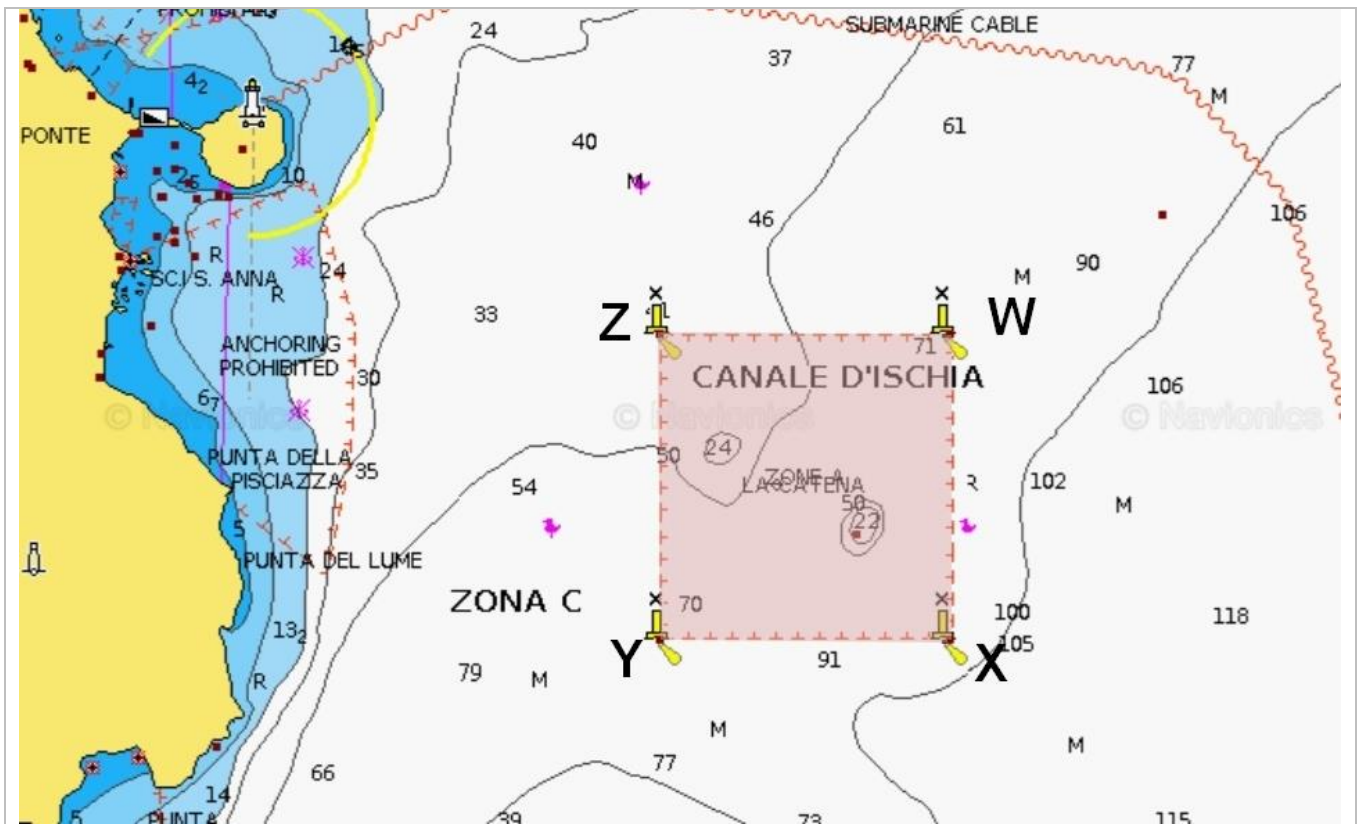
**LEGEND**

- S/F SO - START/FINISH SOCCORSO
- SPM – START PUNTA MOLINO
- SCR – START CARTA ROMANA

## ANNEX 2 – AREAS CLOSED TO NAVIGATION



ZONE A – “VIVARA”		POSITION	
POINT	LAT	LONG	
U	40° 44.90' N	13° 59.20' E	
U1	40° 44.90' N	13° 59.65' E	
V1	40° 44.40' N	13° 59.80' E	
V	40° 44.40' N	13° 59.20' E	



ZONE A – “LA CATENA”		POSITION	
POINT	LAT	LONG	
W	40° 43.50' N	13° 59.75' E	
X	40° 42.90' N	13° 59.75' E	
Y	40° 42.90' N	13° 59.00' E	
Z	40° 43.50' N	13° 59.00' E	